

FLOOR PLAN SHEET NOTES:

- ALL DIMENSIONS ARE TO FACE OF STUD (FOS) UNLESS OTHERWISE OTHERWISE INDICATED
- PROVIDE MIN. 18" X 24" CLR UNDERFLOOR ACCESS TO EACH SEGMENT OF ENCLOSED CRAWL SPACE AREA.
- EXITING FROM FLOORS ABOVE OR BELOW THE FIRST FLOOR HAS BEEN REVISED TO LIMIT THE MAXIMUM TRAVEL DISTANCE TO 50 FEET. (CRC SECTION R311.4)
- SEE SHEET A9.0 FOR SHOWER ENCLOSURE DESIGN REQUIREMENTS PER CRC.
- GARAGE AND DWELLING OCCUPANCY SEPARATION:**
 - AT AN GARAGE WALL WHICH IS SEPARATES IT FROM LIVING SPACE., PROVIDE MIN. 5/8" TYPE "X" GYP BD, 1-HOUR RATED ASSEMBLY.
 - GARAGE ACCESS DOOR REQ'TS: FOR INTERIOR GARAGE ACCESS DOOR SHALL BE SELF-CLOSING AND LATCHING, WITH 20-MIN RATED AND 1 3/4" SOLID CORE, (PER CRC R302.5.1) PROVIDE SMOKE GASKET
- STAIR DESIGN:** STAIRS DIMENSIONS: TREAD MIN. 10", RISER MAX. 7-3/4" (PER 2013 CRC R311.7.5.1 & R311.7.5.2)
- HANDRAILS (PER 2013 CRC R311.7.8)**
 - PROVIDE HANDRAIL AT ALL STAIRS WITH 4 OR MORE CONTINUOUS RISERS (PER 2013 CRC R311.7.8).
 - HANDRAILS DIM 1.5 TO 2" DIAMETER, MIN. CLEARANCE 1-1/2" FROM THE WALL (PER 2013 CRC R311.7.8.3)
 - THE TOP OF ALL HANDRAILS SHALL BE SET AT 34-38" ABOVE ALL LANDINGS AND TREAD NOSINGS. (PER 2013 CRC R311.7.8.1)
 - THE HANDRAILS SHALL BE CONTINUOUS FOR THE FULL LENGTH OF THE STAIRS.

- GUARDRAILS:**
 - PROVIDE GUARDRAILS AT SURFACES WHEN GREATER THAN 30" ABOVE SURFACE BELOW, PER (CRC SECTION R312.11)
 - THE TOP OF ALL GUARDRAILS SHALL BE SET AT 42" ABOVE FINISHED FLOOR.
 - THE INTERMEDIATE RAILS SHALL BE SPACED WHERE A 4" SPHERE SHALL NOT PASS THOUGH AT ANY POINT, EXCEPT 6" AT STAIR RISER (PER CRC R312.1.3)
 - THE DESIGN LOADS FOR THE TOP RAIL AND OPEN GUARDS SHALL COMPLY WITH CRC SECTION 1607.8.1 REQUIREMENTS: THE GUARDRAIL DESIGN SHALL SUPPORT A MINIMUM 200 POUND FORCE APPLIED HORIZONTALLY AT ANY POINT ALONG THE TOP RAIL AT 50 POUNDS APPLIED TO A VERTICAL AREA EQUAL TO 1 SQUARE FEET BETWEEN VERTICAL GUARD SUPPORTS.

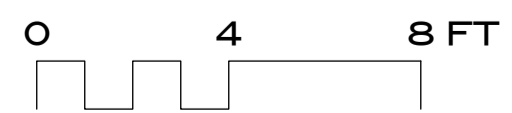
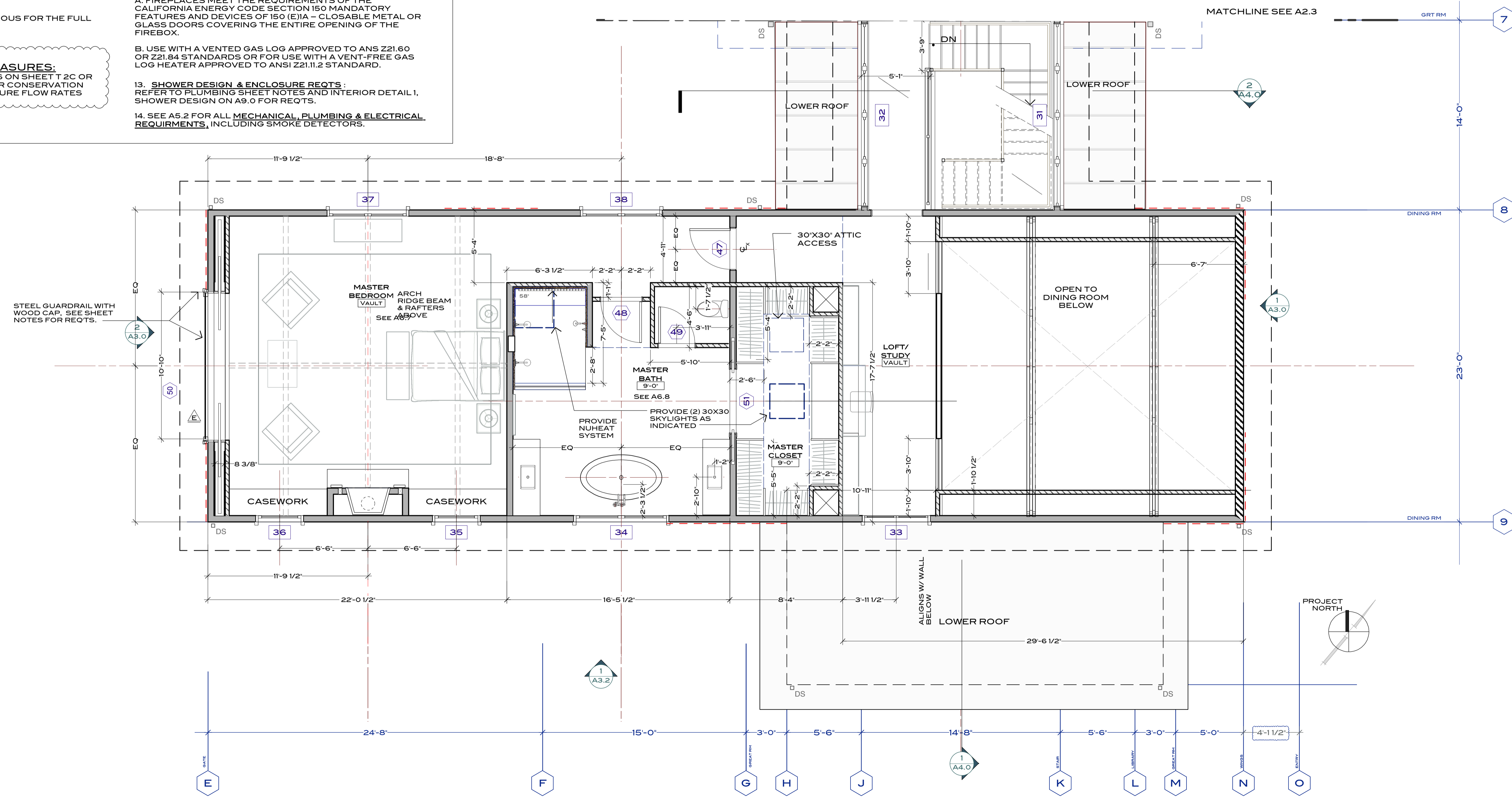
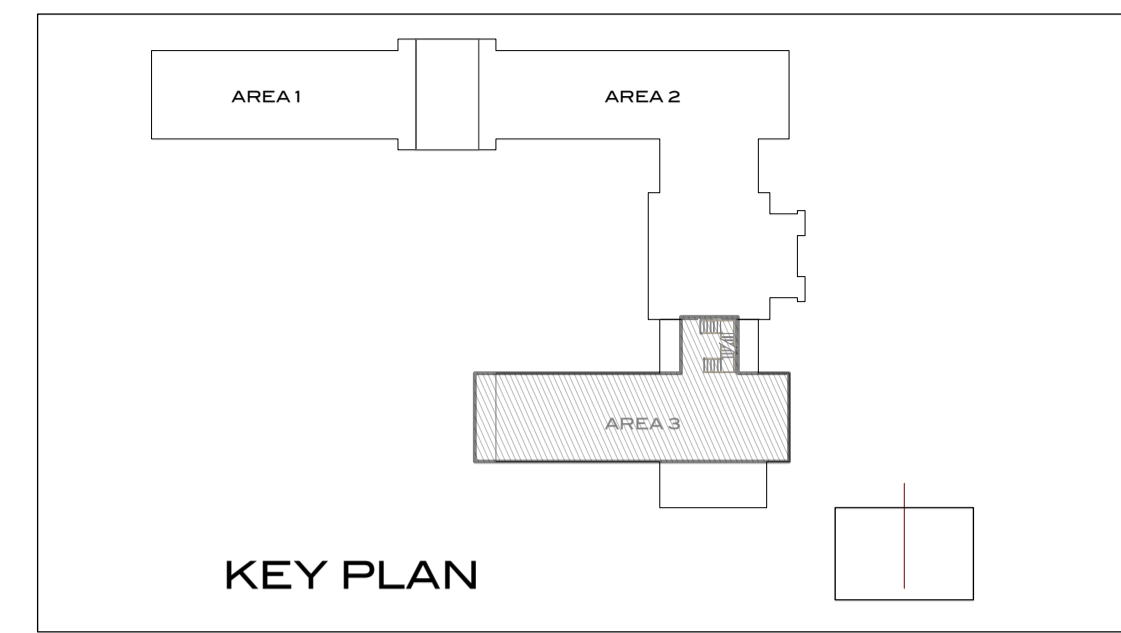
- THRESHOLD & LANDINGS:** THRESHOLD HEIGHTS ARE LIMITED AS FOLLOWS:
 - LANDINGS AT EXTERIOR DOOR SHALL BE NO LOWER THAN 1-1/2" DOWN FROM TOP OF THRESHOLD (PER CRC R311.3.1)
 - EXCEPTION: IF THE DOOR IS NOT IN PATH OF EGRESS, LANDINGS MAY BE NO LOWER THAN 7/8"

- SKYLIGHTS:** RESIDENTIAL SKYLIGHTS SHALL COMPLY WITH THE 2013 CRC R308.6 FOR MATERIALS AND GLAZING REQUIREMENTS; ALSO SHALL COMPLY WITH CRC R308.6.9 FOR TESTING DATA.
- FIRE SPRINKLERS:** RESIDENTIAL FIRE SPRINKLER SYSTEMS ARE REQUIRED IN ALL NEW RESIDENTIAL CONSTRUCTION. (CRC SECTION R313.2)

- FIREPLACES:**
 - FIREPLACES MEET THE REQUIREMENTS OF THE CALIFORNIA ENERGY CODE SECTION 150 MANDATORY FEATURES AND DEVICES OF 150 (E)1A - CLOSABLE METAL OR GLASS DOORS COVERING THE ENTIRE OPENING OF THE FIREBOX.
 - USE WITH A VENTED GAS LOG APPROVED TO ANS Z21.60 OR Z21.84 STANDARDS OR FOR USE WITH A VENT-FREE GAS LOG HEATER APPROVED TO ANSI Z21.11.2 STANDARD.

- SHOWER DESIGN & ENCLOSURE REQ'TS:** REFER TO PLUMBING SHEET NOTES AND INTERIOR DETAIL 1, SHOWER DESIGN ON A9.0 FOR REQ'TS.
- SEE A5.2 FOR ALL MECHANICAL, PLUMBING & ELECTRICAL REQUIREMENTS, INCLUDING SMOKE DETECTORS.

CAL GREEN MANDATORY MEASURES:
REFER TO CAL GREEN REQUIREMENTS ON SHEET T 2C OR T2D FOR ENERGY EFFICIENCY & WATER CONSERVATION STANDARDS SUCH AS PLUMBING FIXTURE FLOW RATES



NOTE: GRID LINES REPRESENT FACE OF STUD, NOT FACE OF FOUNDATION